



Treat Your Blast Air



AIRPREP SYSTEMS



950 Air Dryer System (ADS)



950 Aftercooler System (ACS)

Schmidt AirPrep Systems (Aftercoolers/Air Dryers/Moisture Separators) effectively provide cooler, cleaner and drier air to your blasting system while maintaining negligible drop in pressure.

Wet air causes flash rusting, clogs blast pots with damp abrasives, damages control systems and reduces productivity. Drier air reduces wear, downtime and maintenance, saving time and money.

System types are available to meet your specific requirements: Aftercoolers (ACS), Air Dryers (ADS) and Moisture Separators.



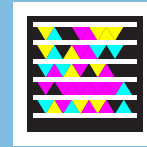
250 ACS Portable



800 cfm Moisture Separator



950 ACS with Portable Option



- Compact, vertical air flow design for improved efficiency
- Skid mounted with forklift pockets and full-load lifting eyes for portability; Stationary, Portable and custom systems available
- Protective bar grating over radiator
- Pneumatic fan motor standard; Electric fan motor available
- Choice of system type to meet your specific application requirements: Aftercooler (ACS) or Air Dryer (ADS)
- Air Dryer Systems units use deliquescent; therefore our vessels are hot dipped galvanized to protect your investment



MODEL	CFM	VOLUME/AIR DRYER DELIQUESCENT STORAGE	INLETS/OUTLETS (NPT)	DIMENSIONS	WT.
ACS 250P	250	5.4 cu. ft.	(1) 2" / (1) 2", (2) 1 1/2"	35"L x 23.5"W x 54"H	350 lb.
ACS 400P	400	5.4 cu. ft.	(1) 2" / (1) 2", (2) 1 1/2"	35"L x 23.5"W x 58"H	425 lb.
ACS 400	400	8.8 cu. ft.	(1) 2" / (1) 2", (2) 1 1/2"	46"L x 30"W x 68"H	620 lb.
ACS 750	750	10.0 cu. ft.	(1) 2" / (1) 2", (2) 1-1/2", (4) 1"	54"L x 30"W x 73"H	785 lb.
ACS 950	950	10.2 cu. ft.	(1) 3" / (1) 3", (2) 2", (4) 1"	66"L x 35"W x 85"H*	1,105 lb.
ACS 1200	1200	10.2 cu. ft.	(1) 3" / (1) 3", (2) 2", (4) 1"	70"L x 35"W x 85"H*	1,080 lb.
ACS 1600	1600	10.2 cu. ft.	(1) 3" / (1) 3", (2) 2", (4) 1"	74"L x 37"W x 85"H*	1,640 lb.
ADS 250P	250	2.7 cu. ft. / 1.5 cu. ft.	(1) 2" / (1) 2"	35"L x 23.5"W x 54"H	360 lb.
ADS 400P	400	2.7 cu. ft. / 1.5 cu. ft.	(1) 2" / (1) 2"	35"L x 23.5"W x 58"H	450 lb.
ADS 400	400	8.7 cu. ft. / 5.9 cu. ft.	(1) 2" / (1) 2", (2) 1"	46"L x 30"W x 68"H*	765 lb.
ADS 750	750	11.7 cu. ft. / 8.0 cu. ft.	(1) 2" / (1) 2", (2) 1"	54"L x 30"W x 82"H*	860 lb.
ADS 950	950	11.7 cu. ft. / 8.0 cu. ft.	(1) 3" / (1) 3", (2) 1"	63"L x 35"W x 92"H*	1,300 lb.
ADS1200	1200	11.7 cu. ft. / 8.0 cu. ft.	(1) 3" / (1) 3", (2) 1"	70"L x 35"W x 92"H*	1,315 lb.
ADS1600	1600	19.0 cu. ft. / 17.0 cu. ft.	(1) 3" / (1) 3", (2) 1"	76"L x 37"W x 95"H*	2,210 lb.

* Electric motor adds 5" to height