



# Blast and Recovery System



## IBRS

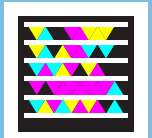
(Industrial Blast & Recovery System)



- Features Schmidt TVII and ComboValve
- Optional High Flow Auto Air Valve for large nozzle applications
- Moisture separator and media vibrator ensure even consistent flow of abrasive
- Optional high efficiency secondary cyclone extends dust collector filter life
- Cartridge style dust collector with automatic pulse jet to minimize clogging of filter
- Custom systems available
- Optional floor trough system available

The Schmidt Industrial Blast and Recovery system is designed to meet the needs of industrial blasting operations. This flexible system offers an affordable alternative to traditional blast rooms. A wide range of available vessel sizes allows for multiple operators and high productivity.

## Convert Your Room into a Blast Room



### Pressure Vessel

6.5 CF 24" dia. ASME Sect VIII coded pressure vessel rated for 150 psig  
Standard Schmidt 3¾" dia. pop-up with spider  
90° cone bottom, 6" x 8" Handway  
(2) Two outlet capability



### Blast Controls

(1) 1½" Thompson Valve II metering (polyurethane sleeve)  
(1) 1¼" Union end ball valve  
G2 Pneumatic deadman controls with 55' twinline  
Manual Blowdown  
High Flow AAV for greater productivity  
1½" small pot moisture trap



### Hopper

24" dia. 6.5 CF above pressure vessel  
Access door(s) at top and bottom for screen and pop-up  
Vibrating screen with 1/4" perforation  
High level sight glass

### Reclaimer

24" dia. cyclonic design  
Adjustable air wash  
Wear resistant material or liner

### Dust Collector

Two cartridge design (2 paper filters included)  
Dual doors for easy access to cartridges  
Automatic 120VAC pulse controls with (2)  
Goyen pulse valves  
Magnahelic gage for filter sensing  
1000 CFM @ 32" WC 10HP Electric  
Blower 460 or 230/3PH/60 Hz  
Hi-attenuation blower silencer (approx. 85dB)

### Miscellaneous Features

Skid mounted with side fork pockets  
Standard Schmidt blast, prime and paint white  
25' of 6" vacuum hose included

### Options Available

Additional Thompson Valve II pneumatic outlet  
Secondary cyclone separator  
800 CFM moisture separator  
Tungsten Carbide sleeve  
Union end ball valve  
Electric controls (per outlet) (specify voltage)  
Remote abrasive cutoff *Pneumatic*  
Remote abrasive cutoff *Electric*  
ComboValve blowdown  
Option for 10.5 CF (30" dia.) blast pot & hopper