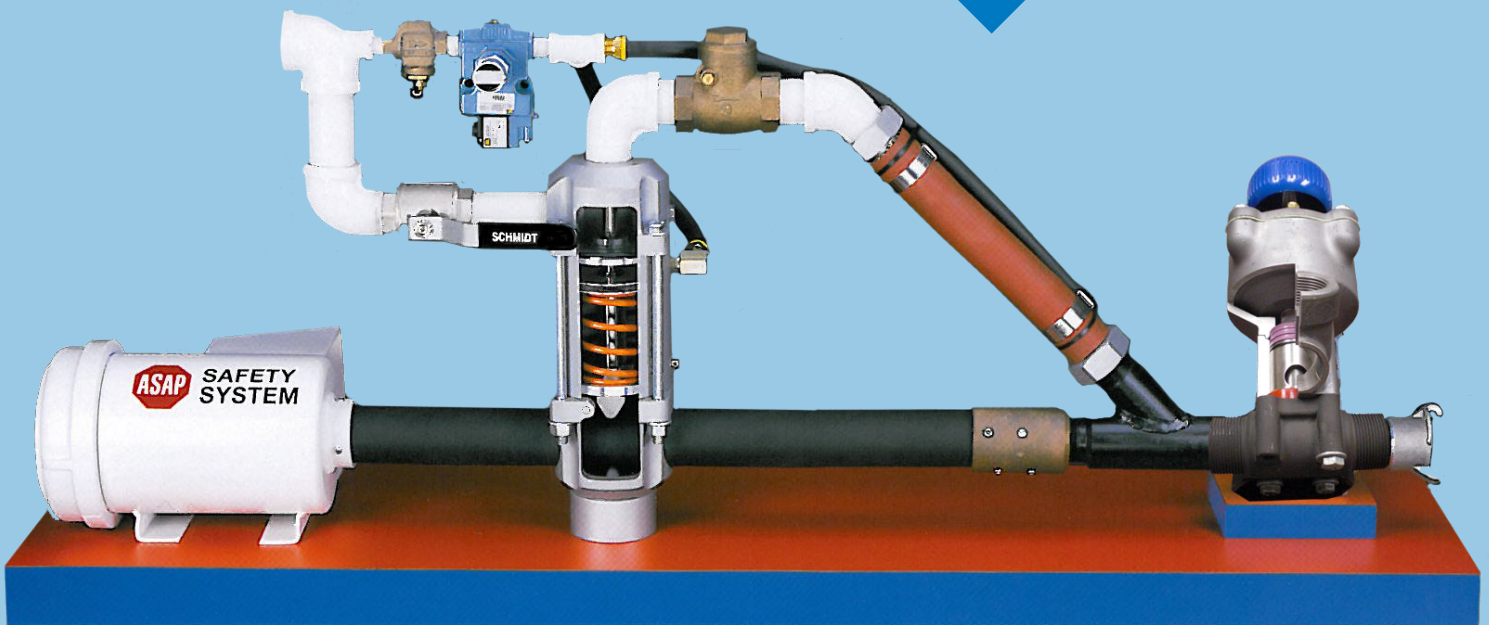
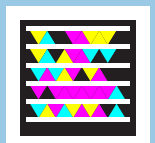


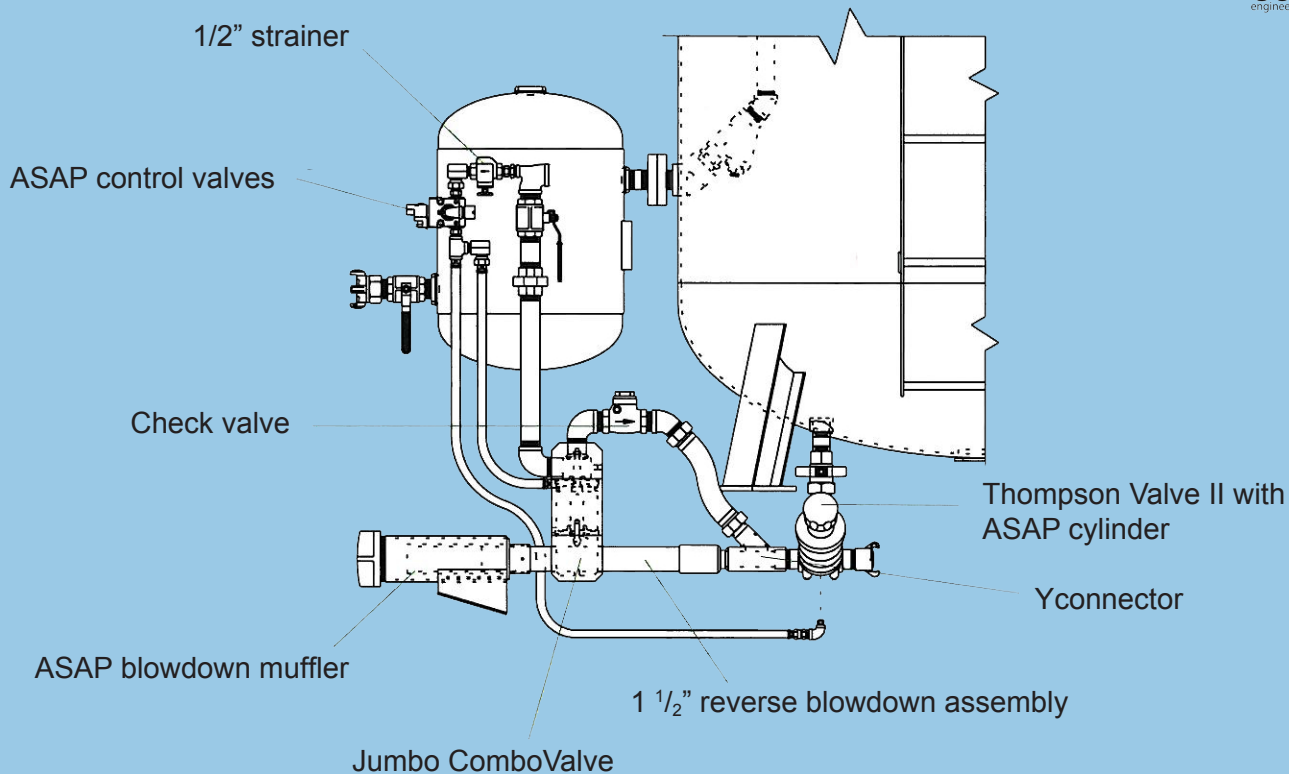
ASAP SAFETY SYSTEM



Standard blast outlets shut off by closing valves to stop the flow of air and abrasive. The energy in the blast hose must still dissipate through the blast nozzle. An 1 1/2" blast hose with a #8 (1/2") nozzle at 200 feet has been reported to take as long as 14 seconds for nozzle to become non-aggressive.

The *Schmidt ASAP Safety System, which has the safest blast controls known, instantly depressurizes blast hose pressure when the deadman control is released, providing complete pressure relief at the nozzle on the same 200 foot hose in less than one second.*





- Provides means for releasing blast hose pressure, even if the nozzle is obstructed or the blast hose is blocked
- Jumbo ComboValve provides an 1 1/2" opening to release residual hose pressure
- High-capacity control valve provides instantaneous system response
- Engineered blowdown diffuser safely absorbs the energy of the abrasive and exhaust air
- "Y" connector is heat treated, abrasive resistant material for extended life
- Jumbo ComboValve has large air passage for high production rates

